



展覽工作紙
(中學)
Exhibition
Worksheet
(Secondary School)





細看兵俑

Check out the
terracotta warriors

頭戴 (1) _____

I am wearing a (1) _____
_____.

外面披著 (2) _____

I am wearing (2) _____.

身穿 (3) _____ 層長襦

I am wearing a long, (3) _____
-layered robe.

圖 I

Photo I

圖II

Photo II



頭綰著 (4) _____ 在
頭頂 (5) _____ 側。

My hair is tied in a round
(4) _____ on the
(5) _____ of the head.

下身穿 (6) _____

I am wearing (6) _____
_____.

7. 請指出圖I及圖II中的分別是什麼兵俑?

Can you identify the terracotta warriors in photos I and II? What kind of soldiers are they?

答案 Answer: I _____ II _____

8. 你認為哪一個兵俑的官階較高?

Which one of them has the higher rank?

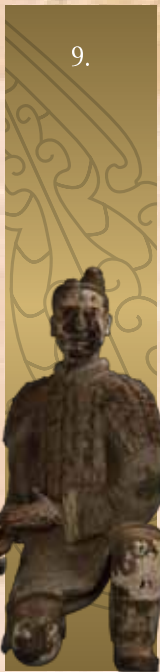
答案 Answer: _____

兵俑英姿

Terracotta warriors

所有兵俑的造形源於真實的秦軍將士，製作均按照秦軍編製，完美地顯現了秦軍的風範。試往展覽廳找出各兵俑的名稱。

All the terracotta warriors are authentic representations of Qin soldiers and they accurately reflect the military structure of the Qin army. Visit the gallery and find out what these soldiers are.



() 俑
Terracotta
()
archer with paint



鎧甲下級軍吏俑
Terracotta junior
armoured officer



() 俑
Terracotta
()



() 俑
Terracotta armoured
()



() 俑
Terracotta
()
archer



() 俑
Terracotta armoured
()

勇士髮冠

Headwear of the terracotta warriors

您能分辨以下兵俑頭上哪些是髮髻或冠帽嗎？試找出它的正確名稱。

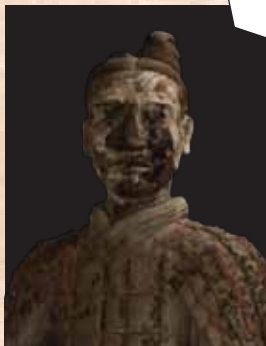
Can you identify the different styles of buns and caps and match them with the terracotta warriors?



14. 髮髻 Bun 冠帽 Cap



18. 髮髻 Bun 冠帽 Cap



15. 髮髻 Bun 冠帽 Cap

- A. 圓髻偏右式
Round bun on the right
- B. 單板長冠
Single tier flattened cap
- C. 圓髻偏左式
Round bun on the left
- D. 雙板長冠
Double tier flattened cap
- E. 鷓冠
Crossbill-tailed cap



17. 髮髻 Bun 冠帽 Cap



16. 髮髻 Bun 冠帽 Cap

文物多面體

Match the artefacts

除兵馬俑外，展品中還有許多珍貴的文物，試找出以下展品的類別。

There are many other valuable artefacts on display alongside the terracotta warriors. Can you identify what the following objects are made of?

- A. 青銅器 B. 金器 C. 陶器 D. 玉器
Bronze Gold Pottery Jade



19.

A



20.



21.



22.

雙螭雙蛇龍首金帶鉤
*Gold belt hook with dragons,
two serpents and dragon head*



23.



24.



25.



26.



27.

還我本「色」

Restoring the original paints on the terracotta warriors

下圖的彩繪俑雙目刻畫傳神，上體筆直挺立，下肢作做蹲跪狀。原為通體彩繪，經人為破壞和自然侵蝕後，現已脫落近半。請到展覽廳仔細觀看後，寫下該部位原來的顏色。

With his straight back, right knee on the ground and eyes looking attentively to the front, this terracotta kneeling archer was crafted in lifelike detail. It still features some of the original pigments that it was painted with, although more than half of the paintwork has faded as a result of erosion and man-made damage. Go to the gallery and find out what colours it was originally painted.

28. 髮髻 Bun

()

30. 面部 Face

()

29. 手 Hand

()

31. 腿部 Leg

()

32. 這個兵俑的名稱是

This terracotta warrior is known as a _____.



一統天下

Unification of China by the First Emperor

戰國時代嬴政（即秦始皇）以強大軍事武力，先後攻滅六國，建立大一統的秦帝國，試在下列時間線上填上正確的答案。

During the Warring States period, Ying Zheng, the King of Qin, employed his powerful military to subjugate the other six states and establish a unified empire. Fill in the gaps in the timeline below.

時間線

Timeline

誕生 Ying Zheng is born.	即位 Becomes the King of Qin.	滅 34. ()國 Subjugates the state of 34. ().	滅 36. ()國 Subjugates the state of 36. ().	滅 38. ()國 Subjugates the state of 38. ().	命蒙恬出擊匈奴， 修建 40. () Instructs the general <i>Meng Tian</i> to conquer <i>Xiongnu</i> and build 40. ().
▶▶ 公元前259年 259 BC	公元前247年 247 BC	公元前230年 230 BC	公元前225年 225 BC	公元前222年 222 BC	公元前214年 214 BC
公元前251年 251 BC	公元前246年 246 BC	公元前228年 228 BC	公元前223年 223 BC	公元前221年 221 BC	公元前210年 210 BC
由趙國返回 33. () Returns to 33. () from <i>Zhao</i> .	建皇陵 Starts to build his mausoleum.	滅 35. ()國 Subjugates the state of 35. ().	滅 37. ()國 Subjugates the state of 37. ().	滅 39. ()國 Subjugates the state of 39. ().	秦始皇逝世 China's First Emperor dies.

觀後感

Post-visit thoughts

透過參觀今次展覽，你對中國第一位皇帝 — 秦始皇會如何評價？試繪畫一幅六至八格的秦始皇歷史漫畫及參加校際比賽吧！參賽表格可於本館網頁 <http://hk.history.museum> “最新消息” 下載。快來參加比賽吧！

Now that you have visited the exhibition, what do you think about China's First Emperor – Qin Shihuang? Draw a comic strip of 6 to 8 panels about the history of China's First Emperor and enter the competition! Application forms can be downloaded from our website <http://hk.history.museum> > What's New.



聯合主辦
Jointly presented by



陝西省文物局
Shaanxi Provincial Cultural Relics Bureau

獨家贊助
Solely sponsored by



香港賽馬會慈善信託基金
The Hong Kong Jockey Club Charities Trust

承辦
Co-organised by



中華人民共和國香港特別行政區
Hong Kong Special Administrative Region
of the People's Republic of China

15th 周年紀念
ANNIVERSARY

香港歷史博物館
香港九龍尖沙咀漆咸道南100號
Hong Kong Museum of History
100 Chatham Road South, Tsim Sha Tsui,
Kowloon, Hong Kong

☎ 2724 9042

💻 <http://firstemperor.lcsd.gov.hk>

💻 <http://hk.history.museum>



答案：
1. 鸞冠 2. 鎧甲 3. 雙 4. 圓髻 5. 右 6. 短褲 7. I. 鎧甲將軍俑 II. 鎧甲武士俑
8. 鎧甲將軍俑 9. 彩繪跪射 10. 騎兵 11. 鎧甲御手 12. 立射 13. 鎧甲武士
14. A 15. C/ 髮髻 16. B/ 冠帽 17. E/ 冠帽 18. D/ 雲紋高足玉杯 24. C/ 陶函
20. C/ 五角形水管道 21. B/ 金虎符 22. B 23. D/ 雲紋高足玉杯 24. C/ 陶函
25. A/ 青銅鸞雁 26. B/ 小金盃 27. A/ 青銅大鼎 28. 朱紅色 29. 粉白色
30. 粉紅色 31. 深紅色 32. 彩繪跪射俑 33. 咸陽 34. 韓 35. 趙 36. 魏
37. 楚 38. 燕 39. 齊 40. 長城

Answers:
1. crossbill-tailed cap 2. armour 3. double 4. bun 5. right 6. knee-length trousers
7. 1. Terracotta armoured general II. Terracotta armoured infantryman
8. Terracotta armoured general 9. kneeling 10. cavalryman 11. charioteer 12. standing
13. infantryman 14. A 15. C/ bun 16. B/ cap 17. E/ cap 18. D/ cap
19. Wedge-shaped structural component 20. C/ Pottery pentagonal water pipe
21. B/ Gold tiger-shaped tally 22. B 23. D/ Jade beaker with cloud motif
24. C/ Terracotta granary model 25. A/ Bronze goose 26. B/ Miniature gold washer
27. A/ Bronze tripod cauldron 28. Crimson 29. Pinkish white 30. Pink 31. Dark red
32. Terracotta kneeling archer with paint 33. Xiangyang 34. Han
35. Zhao 36. Wei 37. Chu 38. Yan 39. Qi 40. The Great Wall