

歷久常新 旗袍的變奏

23/6 - 13/9/2010

The Evergreen Classic Transformation of the Qipao



背 back
△ △ △

底 base

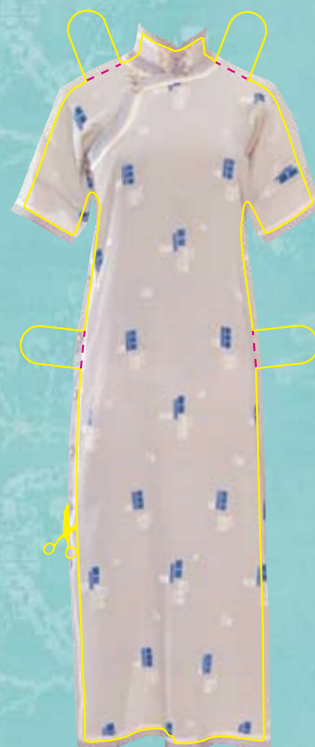
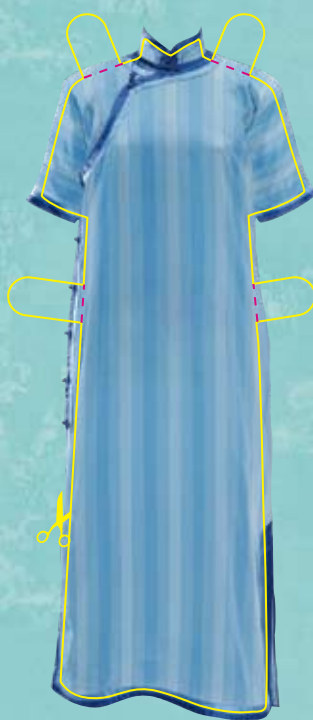
「香港故事」展區六中的雙層電車
Display of double-deck tram in "The Hong Kong Story" Gallery 6

請沿線剪下
Cut line

請沿線摺起
Fold line

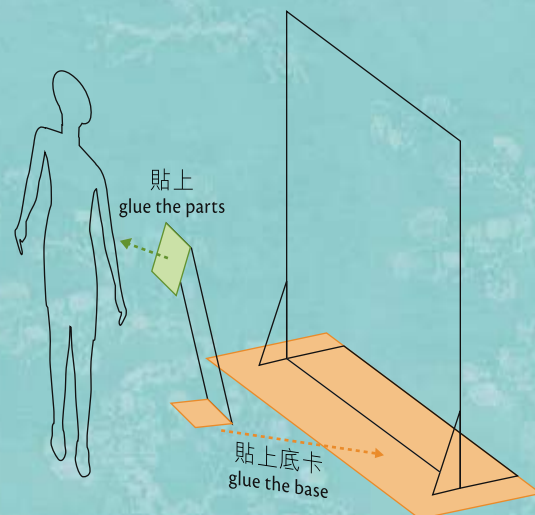
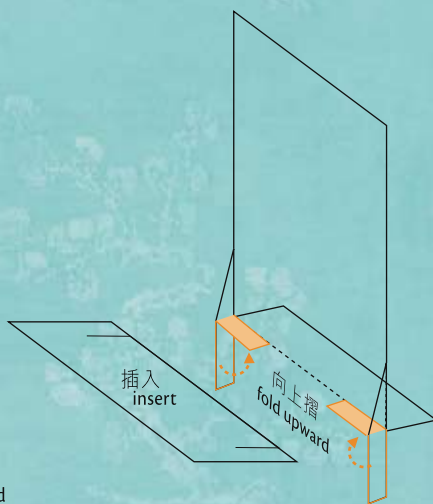
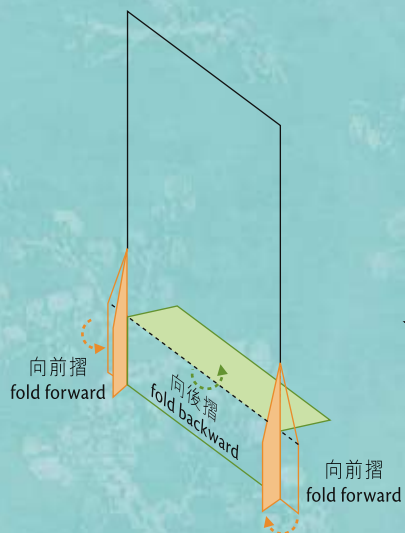
請塗上膠水
Glue the parts





旗袍，1930-40年代
Qipao, 1930-40s.

- 請沿線剪下
Cut line
- 請沿線摺起
Fold line
- 請塗上膠水
Glue the parts



歷久常新 旗袍的變奏

23/6 - 13/9/2010

The Evergreen Classic Transformation of the Qipao



背 back
△ △ △

底 base

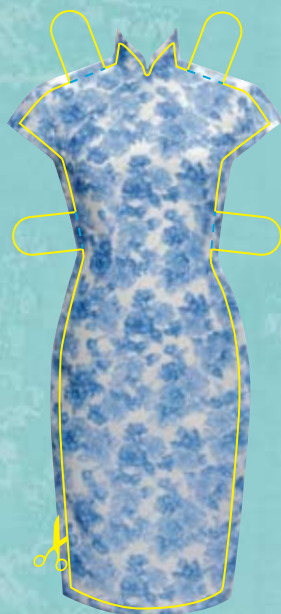
「香港故事」展區六中的茶樓場景
Scene of teahouse in "The Hong Kong Story" Gallery 6

請沿線剪下
Cut line

請沿線摺起
Fold line

請塗上膠水
Glue the parts





旗袍，1950-60年代
Qipao, 1950-60s.

請沿線剪下
Cut line

請沿線摺起
Fold line

請塗上膠水
Glue the parts

